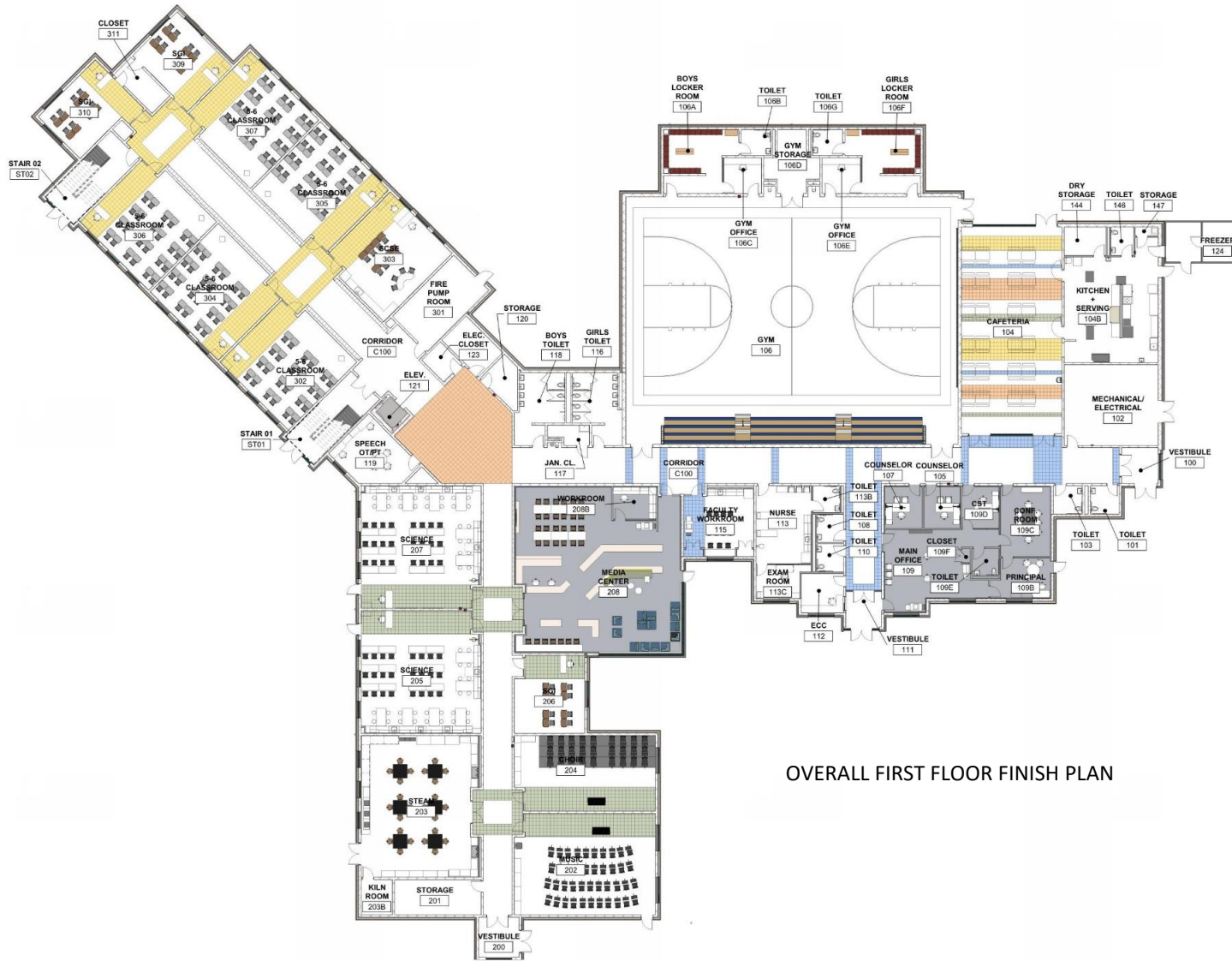


NOTE: REVISED TO REFLECT MEETING COMMENTS

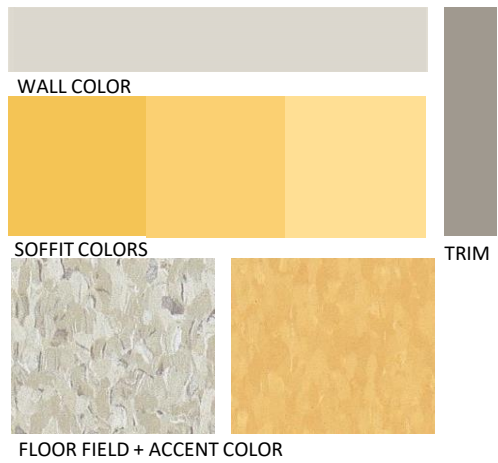


OVERALL FIRST FLOOR FINISH PLAN

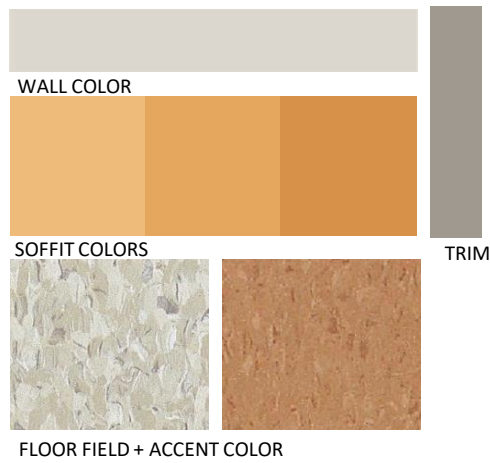


OVERALL SECOND FLOOR FINISH PLAN

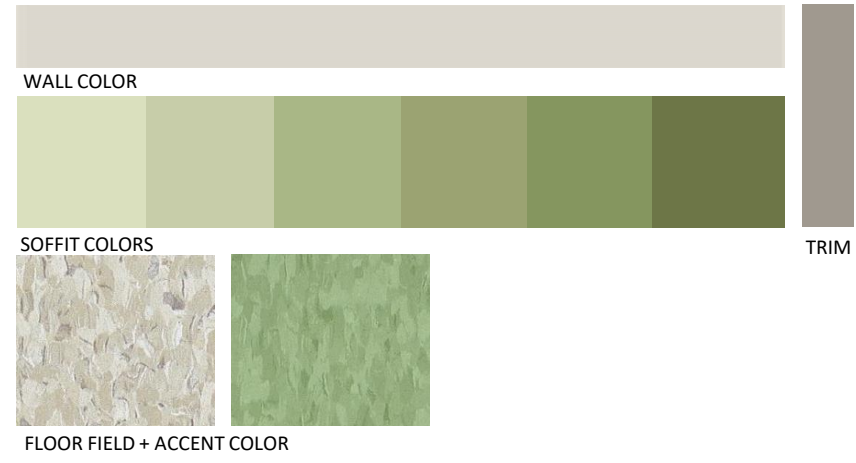
## 300 CORRIDOR – YELLOW SCHEME



## 400 CORRIDOR – ORANGE SCHEME



## 200 CORRIDOR – GREEN SCHEME



STAIR TREADS

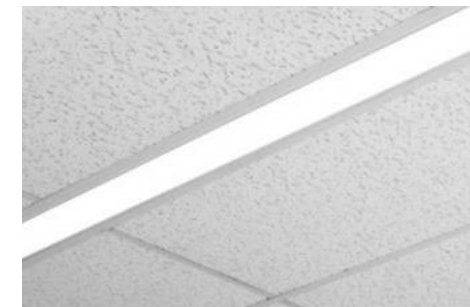


STAIR LANDINGS

## 100 CORRIDOR – BLUE SCHEME



VIEW 01 GYM CORRIDOR - BLUE SCHEME

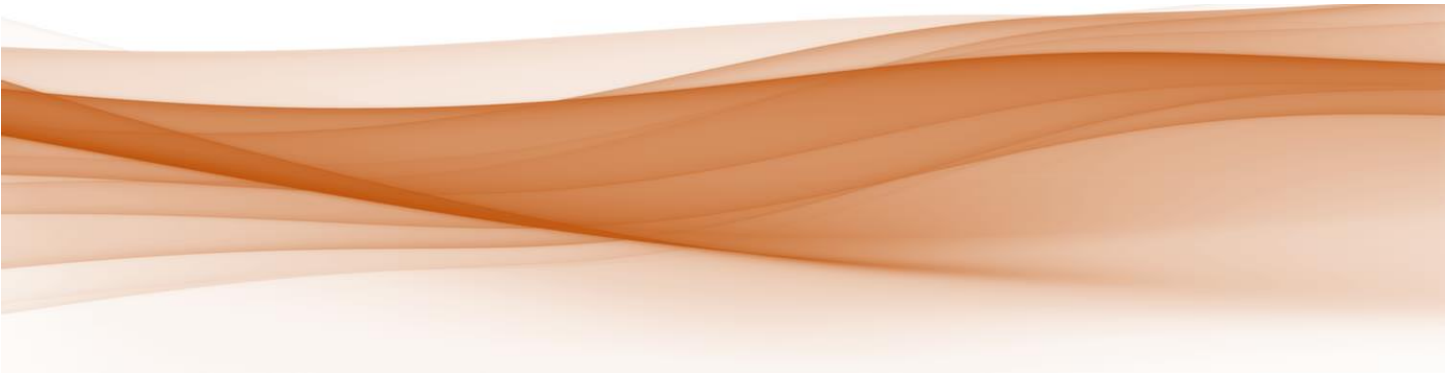


CEILING TILE – SECOND LOOK+ LIGHT FIXTURES



DESIGN CONCEPT IMAGE

NOTE (07.27.22):  
- FINAL GRAPHICS TO BE SELECTED AT A LATER DATE





300 CLASSROOM WING – YELLOW SCHEME



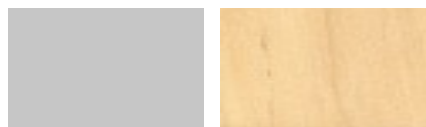
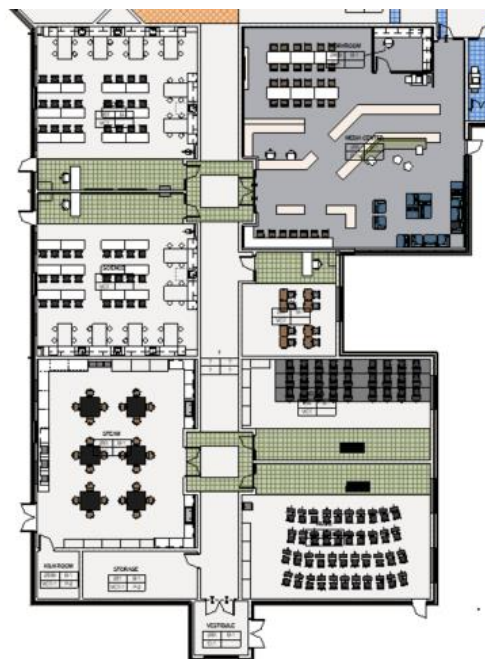
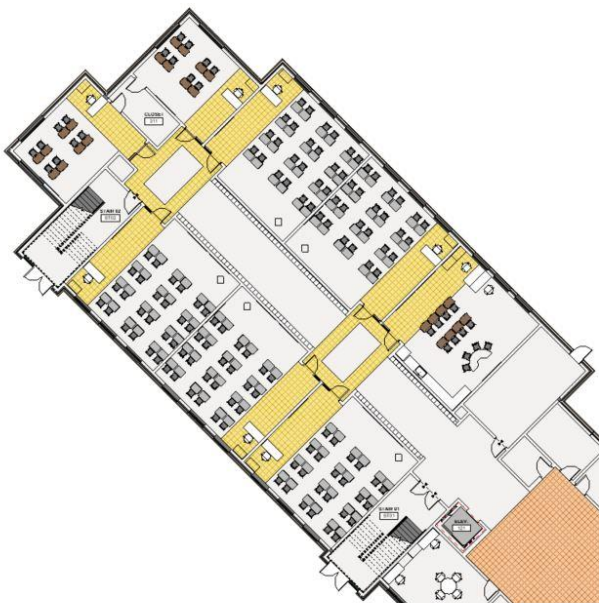
200 CLASSROOM WING – GREEN SCHEME



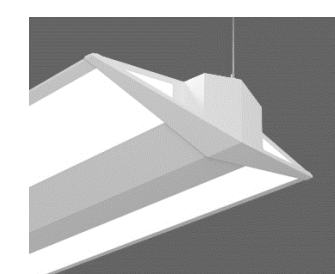
400 CLASSROOM WING – ORANGE SCHEME



TYPICAL CLASSROOM SECOND LOOK CEILING TILE + LIGHT FIXTURES



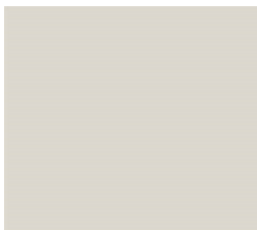
LAB CASEWORK  
(07.27.22 – LIGHT COLOR EPOXY TOP AND LIGHT WOOD FINISH)



DOOR FINISH – TYPICAL



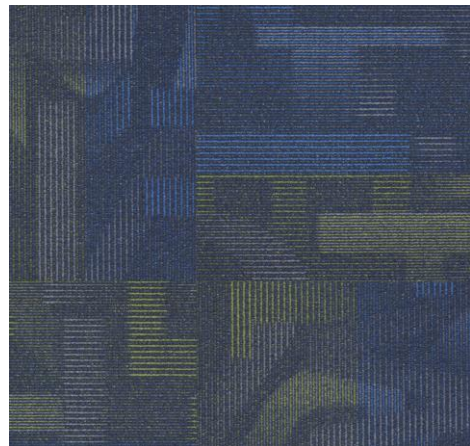
VIEW 01 MEDIA CENTER



PAINT COLORS



CASEWORK



CARPET TILE



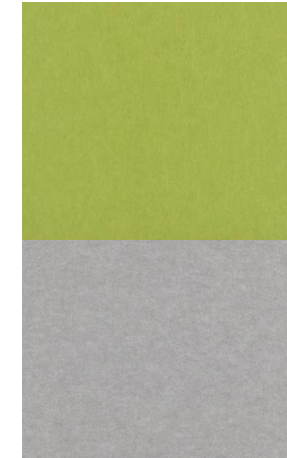
VIEW 02 MEDIA CENTER



VIEW 03 MEDIA CENTER



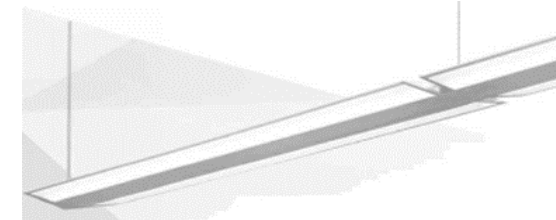
CEILING TILE 2X4



ACOUSTIC CLOUDS



ROUND PENDANT



LINEAR PENDANT

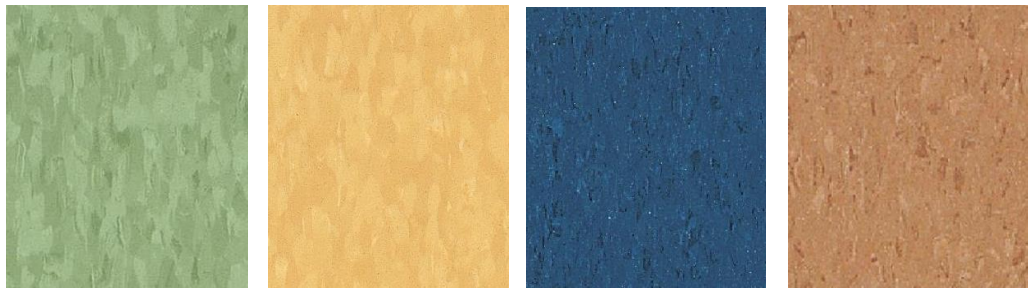


WALL COLOR

BASE + TRIM COLOR



ACCENT WALL COLORS



ACCENT FLOOR COLORS



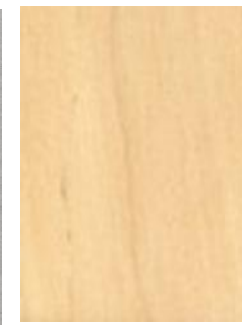
FLOOR COLOR



VIEW 01 CAFETERIA

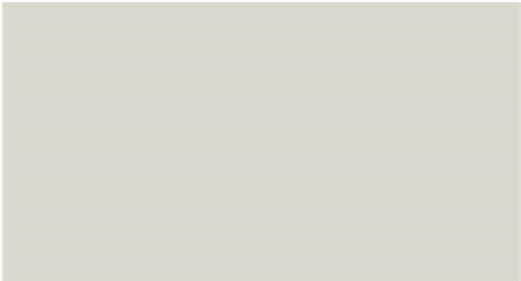


ACOUSTIC BAFFLE COLOR  
(07.27.22 – UPDATED TO NEUTRAL COLOR)



DOOR FINISH – TYPICAL

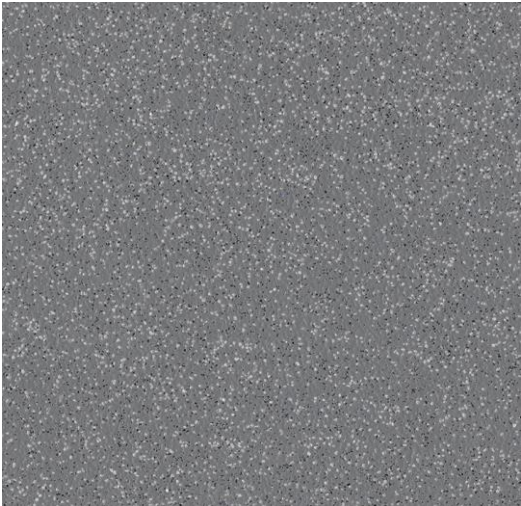
NOTE (07.27.22):  
- ACOUSTIC BAFFLES  
MAY CHANGE DUE TO CEILING HEIGHT



PAINTED CMU WALLS AT SERVING AREA

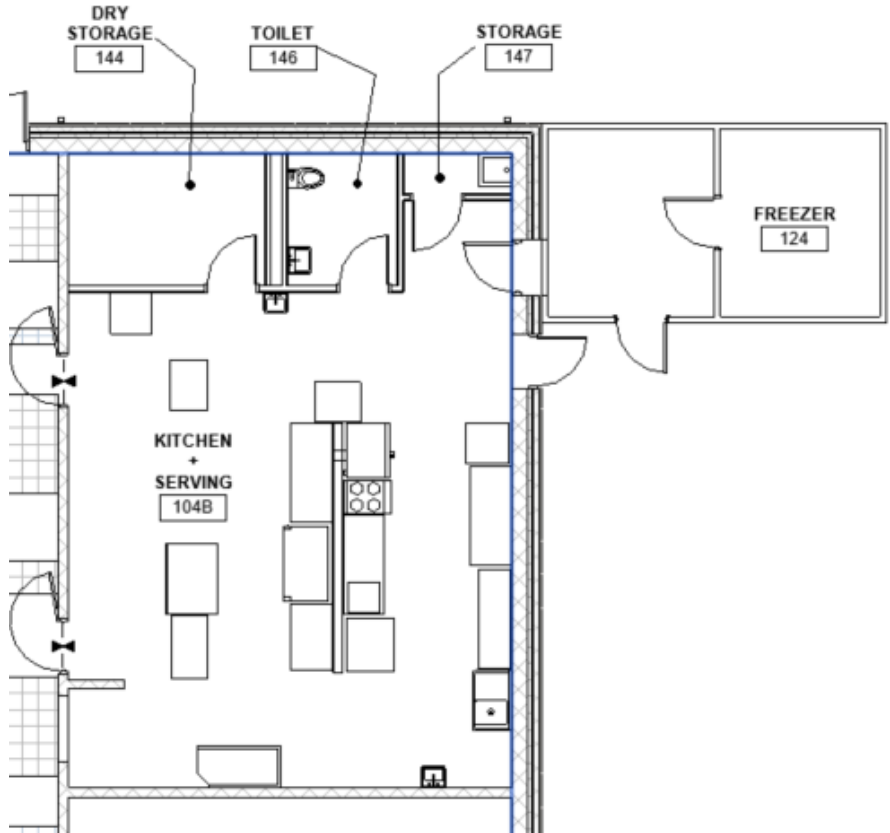


WALL SURFACE AT KITCHEN AREA



SEAMLESS SHEET VINYL FLOOR/BASE  
ALTRO KITCHEN CLASSIC 25

(07.27.22 UPDATED TO REFLECT FLOOR SELECTION)



KITCHEN + SERVING PLAN

# SOUTH HUNTERDON REGIONAL SCHOOL DISTRICT - PROPOSED 5-8 SCHOOL INTERIOR FINISHES – FACULTY AREAS



WALL PAINT



ACCENT PAINT



TRIM



CASEWORK COUNTERS



CASEWORK CABINETS



TYPICAL SECOND LOOK CEILING TILE



LIGHT FIXTURES



NURSE/COT AREA



CARPET TILE



TOILET WALL ACCENT TILE



TOILET WALL TILE



FLOOR TILE + ACCENT TILE



TOILET FLOOR TILE



DOOR FINISH - TYPICAL

(07.27.22 TOILET ROOM FINISHES UPDATED)





ACCENT WALL TILE 4x16



WALL TILE 4x16



FLOOR TILE 12x24



PARTITION COLOR

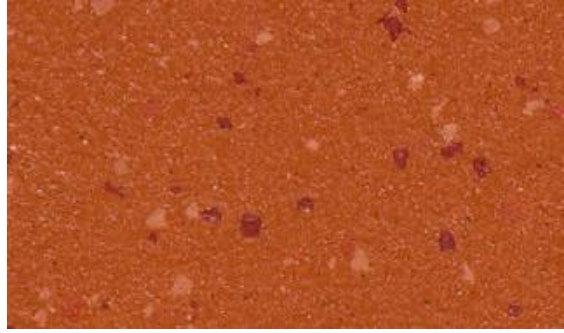
NOTE (07.27.22):  
- ACCENT TILE TO BE THE SAME IN ALL TOILET ROOMS  
- PARTITION COLOR TO BE DARK



LOCKER COLOR

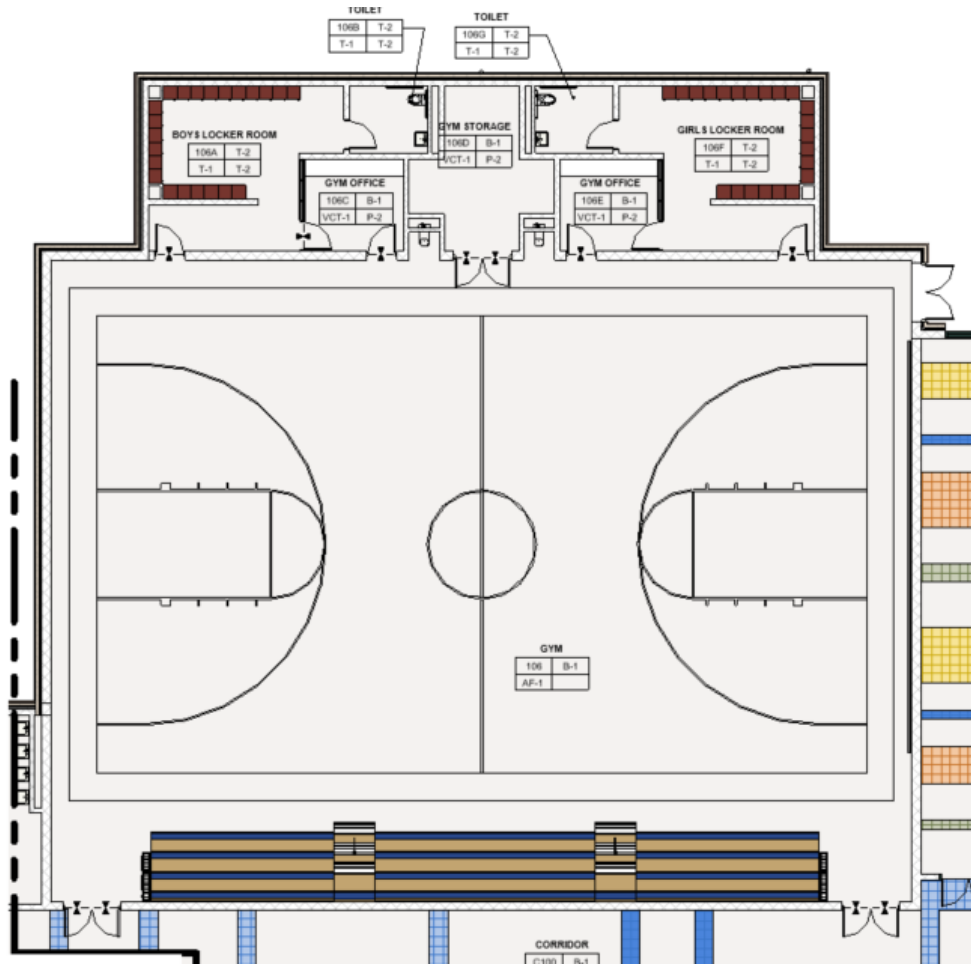


WALL COLOR (PAINTED CMU)



SHEET VINYL FLOOR/BASE

NOTE (07.27.22):  
- BOTH LOCKER ROOMS TO BE SAME COLOR SCHEME  
- SEAMLESS SHEET VINYL FLOOR/BASE

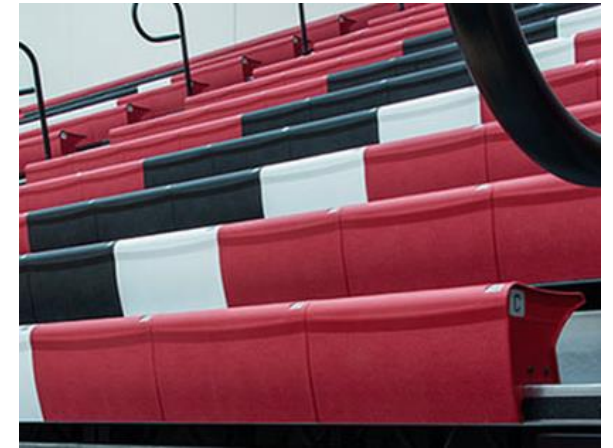


GYM + LOCKER ROOM PLAN

NOTE (07.27.22):  
- COLORS FOR FLOOR AND ALL EQUIPMENT TO BE DETERMINED AT A LATER DATE..



EXAMPLE: WOOD FLOOR FINISHES



EXAMPLE: PLASTIC BLEACHERS



PROPOSED TRAVERSING ROCK WALL WITH FOLD-DOWN PADDED COVER



EXAMPLE: GAME LINE COLORS